



# ECO ETS

## Electromotive drives

■ SYSTEM TECHNOLOGY FOR THE DOOR



### 1. Force – up to 400 kg

The ECO ETS has a strong power unit that safely opens and closes door leafs and up to 1.600 mm in width (EN 7).

**ETS 73** – up to 400 kg (for door leafs up to 1100 mm)

**ETS 64-R** – up to 250 kg (for suitable for fire- and smoke control doors)

**ETS 42** – up to 150 kg

This provides secure automation for external doors that may experience strong wind loads as well as heavy fire protection doors.

With its integrated, high-performance switching power supply (ETS 73 and ETS 64-R: 24 V, 2 A output power) several external operating and safety elements, and even motorised locks, can be supplied. This way external power supplies can be omitted in many applications.

In addition to these parameters, the ETS, with its new electromotive power unit, is extremely quiet and has a well engineered, harmonious movement. It is these properties that make the ETS such an all-rounder for public buildings, hospitals, elderly homes and clinics.



### 2. Model with slide rail on hinge side and hinge-opposite side / also fire protection!

The ETS can be combined as follows:

Lintel installation with standard arm, hinge-opposite side push

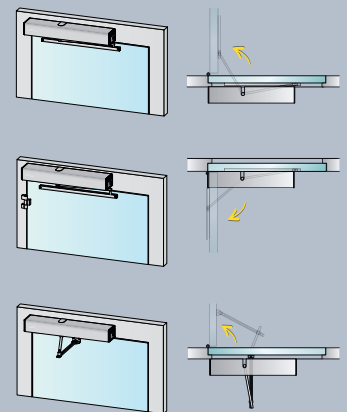
Lintel installation with slide rail, hinge-opposite side push

Lintel installation with slide rail, hinge side pull

All mounting options are available in both standard and fire protection variations.

This gives planners and architects a comprehensive range of design options with sliding rails for all assembly applications, whether that is hinge side or hinge-opposite side, T0 or fire or smoke protection!

For door manufacturers it also opens up new possibilities for the production of fire or smoke protection doors.



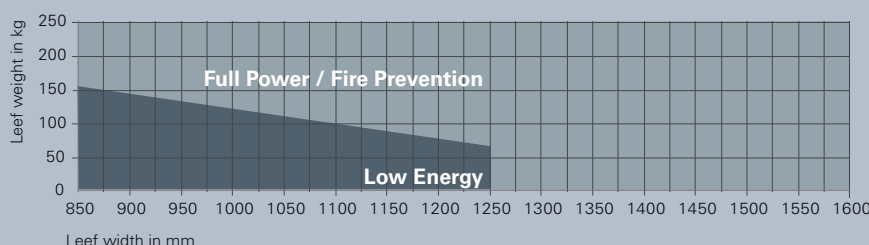
### 3. Low energy and full power in a single power unit

The ETS can be set for two functions on site with one and the same drive. An additional upgrade card is not necessary.

Low energy and full power

The Full Power setting enables automation in heavy, highly frequented public doors, for example, with quick movement sequences. To do this, a surveillance of the movement area with safety sensors is necessary.

The Low Energy setting is specially developed for private households or office and work areas with limited public frequency. Safety sensors can be dispensed with here, there are limitations, however, on door weights and movement speed.



#### 4. Fire and smoke protection / Inverse function / Interlock function

The ETS model ETS 64-R is approved as a hold-open device for fire and smoke protection doors. In combination with a lintel switch it triggers the fire protection closer in the case of an alarm (smoke activated) or power failure.

The inverse function has been specially developed for smoke extraction from buildings. The fire/smoke protection function is reversed here when the alarm is triggered, which means that the door is opened by spring force to enable a smoke extraction. This is also ensured with a power cut, so an emergency power supply is not necessary. This inverse function has already been pre-installed at ETS and is consequently also adjustable on site.

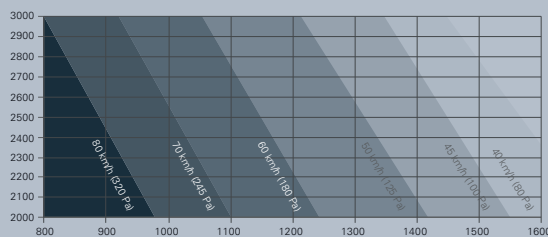
The interlock function regulates the complex automation sequences of double doors in safety areas (controlled and directional flow control).



#### 5. Wind load compensation (ETS 73 / ETS 64-R)

The wind load control is there to adapt the smooth operation of outer doors to different air pressure conditions (to wind force 9, for example (or 320 Pa) / with a door size of 900 x 2,400 mm). A briefly occurring increased wind load (e.g. a strong gust) is recognised by the drive. The control now calculates the additional motor performance for amplifying or retarding the drive, so the door can operate in a virtually unimpeded way.

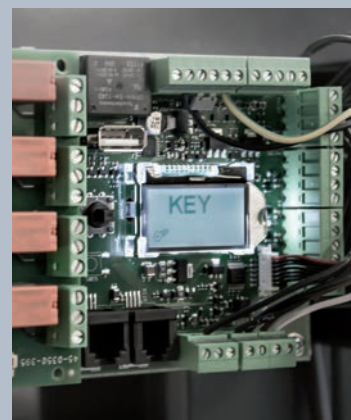
The strength of the wind load depends on the size of the door and the type of arm deployed. For doors that open outwards in areas with regularly increased wind loads (in coastal areas for example) the normal arm (pushing on the opposite hinge side) should be used as far as possible.






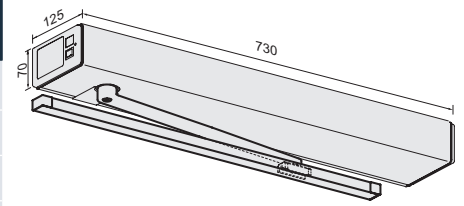
#### 6. Simple assembly and service

The ETS has a simple, user-friendly setting function for all parameters. This is provided by the display panel with joystick function on the control board. A menu style checklist makes it easy to configure the initial operation on site. All parameters can also be configured at a later date or to suit any new operational requirements (password protected) with no need for an external control module or laptop.

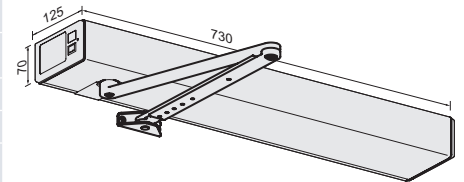
This makes the ETS particularly interesting for assembly and service companies, who do not want to have to use a specific external programming device or special software for every type of drive.



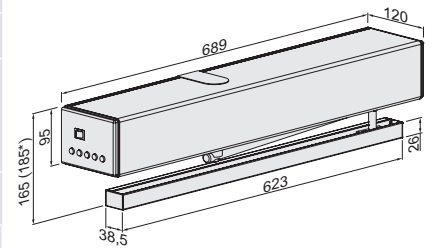
| Performance criteria   |   | ETS 42                              | ETS 73                              | ETS 64-R  |
|--|---|-------------------------------------|-------------------------------------|---|
| Closing force<br>(continuously adjustable)   | Size acc. to EN   | 2 – 4                               | 3 – 7                               | 3 – 6   |
|  | Interior and exterior doors ≤ 1.100 mm  | ■                                   |                                     |   |
| Door width<br>acc. to EN   | Interior and exterior doors ≤ 1.600 mm  |                                     | ■                                   |   |
|  | Fire protection doors ≤ 1400 mm   |                                     |                                     | ■   |
| Dimensions<br>(incl. mounting plate)   | Length in mm  | 730                                 | 690                                 | 690   |
|  | Building depth in mm  | 125                                 | 120                                 | 120   |
|  | Height in mm  | 70                                  | 95                                  | 95  |
| Ambient temperature  |   | -15 to +50° C                       |                                     |   |
| Relative humidity  |   | max. 85%                            |                                     |   |
| Power consumption  |   | max. 350 W                          | max. 560 W                          |   |
|  |   | Stand-by 4 W                        |                                     |   |
| DIN left / right   |   | ■                                   | ■                                   | ■   |
| Adjustable opening speed   |   | max. 40°/s                          |                                     |   |
| Closing speed<br>adjustable with main operation,<br>fixed in case of power failure |   | max. 40°/s                          |                                     |   |
| Adjustable hold open time  |   | 0 - 60s                             |                                     |   |
| Max. door opening angle  |   | 105°                                |                                     |   |
| Tested acc. to EN  |   | <b>DIN 18650</b><br><b>EN 16005</b> | <b>DIN 18650</b><br><b>EN 16005</b> | <b>DIN 18263-4</b><br><b>DIN 18650</b><br><b>EN 16005</b> |
| Suitable for fire- and smoke control doors   |   | -                                   | -                                   | <b>F</b> (DIBt)   |
| Certified acc. to EU-Directives  |   | CE                                  | CE                                  | CE  |
| ■ Yes<br>- No<br>□ Option  |  Wooden door<br> Steel door<br> Profile frame door |                                     |                                     |   |



Dimensions: ETS 42 with slide rail



Dimensions: ETS 42 with standard arm



Dimensions: ETS 73 / ETS 64-R with slide rail

\* In case of rebated doors please use the long pin (included in delivery)

## ECO ETS ■ Harmonious door movement – motor-powered opening – controlled closing

Versions and functions:

- Slide rail pushing (Hinge-opposite side) and pulling (Hinge side)
- Standard arm pushing (Hinge-opposite side)
- Single and double leaf systems with continuous cover
- Integrated, concealed closing sequence control for fire/smoke protection doors (located in the continuous casing)
- Integrated, concealed smoke detector (integrated in the cover, can be refitted (DIBt, EN 54-7))
- Adjustable spring closing force (in currentless mode)
- Easy operation with illuminated program selection keys in the side cover (automatic, always on, manual, exit and night)
- All-pole isolating main switch integrated in the side cover (for ETS 73 nad ETS 64-R)
- Push + Go Function, easy responsiveness
- Servo function, drive detects a mechanical opening and supports with motor power as long as the door is opened
- Adjustable starting power and closing power amplification (for pressing shut into the lock)
- Adjustable start delay (motorized lock, closing sequence)
- Plug + Play, setup of functions with LCD display
- Low energy operation without safety sensor technology
- Very low standy consumption (4 Watts)
- Connectable wind load compensation, max. wind speed 80 km/h (320 Pa) (not for ETS 42)
- Connectable acoustic signal of opening and/ or closing movement



Double leaf swing door system type ECO ETS 64-R IRM-SRI (GSZ) (with integrated closing sequence control and integrated smoke detector)

## ECO ETS 42 / ETS 73 / ETS 64-R ■ Product description

### Single leaf drives (without linkage)



ETS 42



ETS 73



ETS 64-R IRM

| Single leaf drives for interior and exterior doors | Colour          | Article number |
|--|-----------------|----------------|
| ETS 42   | Stainless steel | 5030053933     |
| ETS 73   | Stainless steel | 5030014715     |

| Single leaf drives for FS/RS doors (and inverse) | Colour          | Article number |
|--|-----------------|----------------|
| ETS 64-R   | Stainless steel | 5030014716     |
| ETS 64-R (GSD)                                   | Stainless steel | 5030014717     |
| ETS 64-R IRM                                     | Stainless steel | 5030014712     |
| ETS 64-R IRM (GSD)                               | Stainless steel | 5030014714     |

### Linkage types for ETS



| Slide rail for ETS | Colour          | Article number |
|--------------------|-----------------|----------------|
| GS-ETS 620-ÖB*     | Stainless steel | 5030054059     |
| GS-ETS 830**       | Stainless steel | 5030014713     |



| Standard arm for ETS (up to 250 mm lintel depth) | Colour          | Article number |
|--|-----------------|----------------|
| SGS ETS 250-ER*                                  | Stainless steel | 5030054061     |

\*For lintel depth up to 250 mm (fire protection)

\* Mounting type GSZ or GSD (up to 30 mm lintel depth/ fire protection)

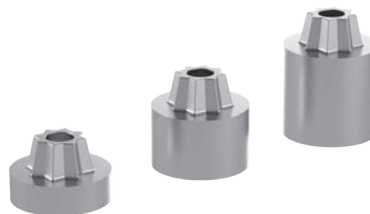
\*\* Mounting type GSZ, GSD or leaf mounting (up to 200 mm lintel depth/no fire protection)

### Axis extensions

#### Clamping pieces (axis extension)

For use with special mountings

| Clamping piece (axis extension) | Article number |
|---------------------------------|----------------|
| AVE 10 (+ 10mm, incl. screw)    | 5030054517     |
| AVE 20 (+ 20mm, incl. screw)    | 5030054519     |
| AVE 30 (+ 30 mm, incl. screw)   | 5030054520     |



Please order any safety elements to provide additional protection at contact points and closing edges at the same time.

**Sensor bars or Flatscan in compliance with DIN 18650 and EN 16005!**

Please order any accessories, such as ceiling smoke sensors, sensor bars and control devices, separately (from page 10 onwards).

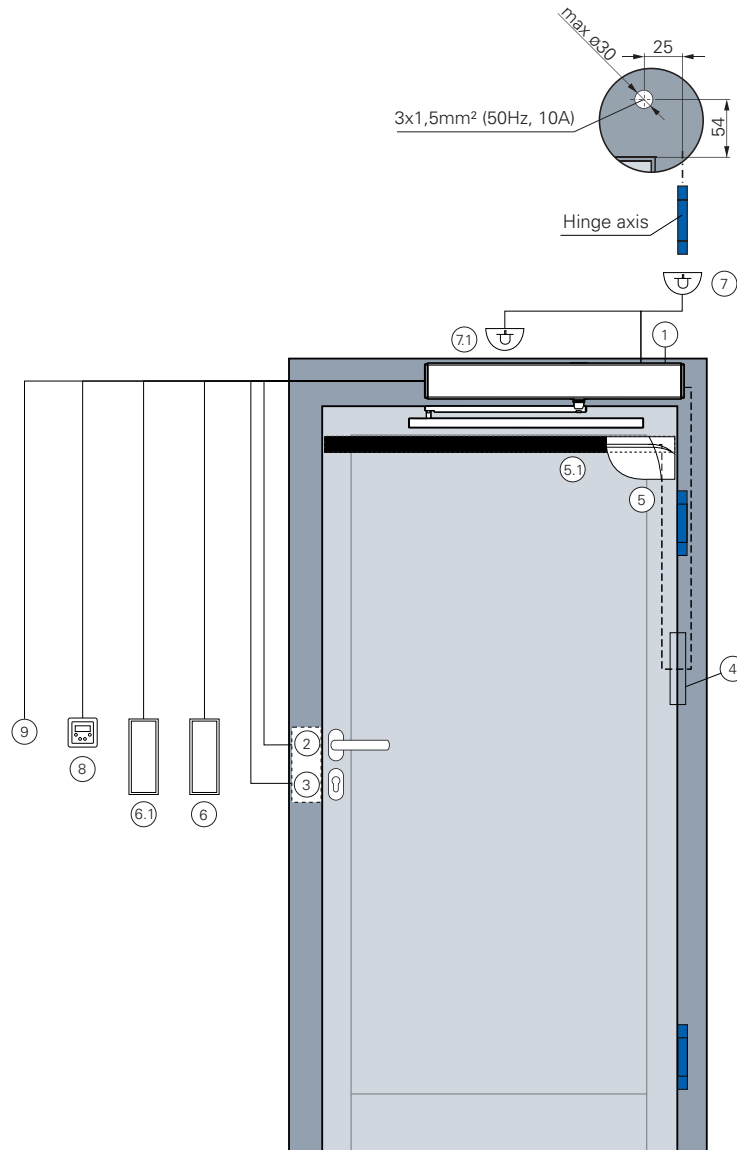
NG = Version for normal arms pushing (head mounting on opposite hinge side)

GSD = Version for slide rails pushing (head mounting on opposite hinge side)

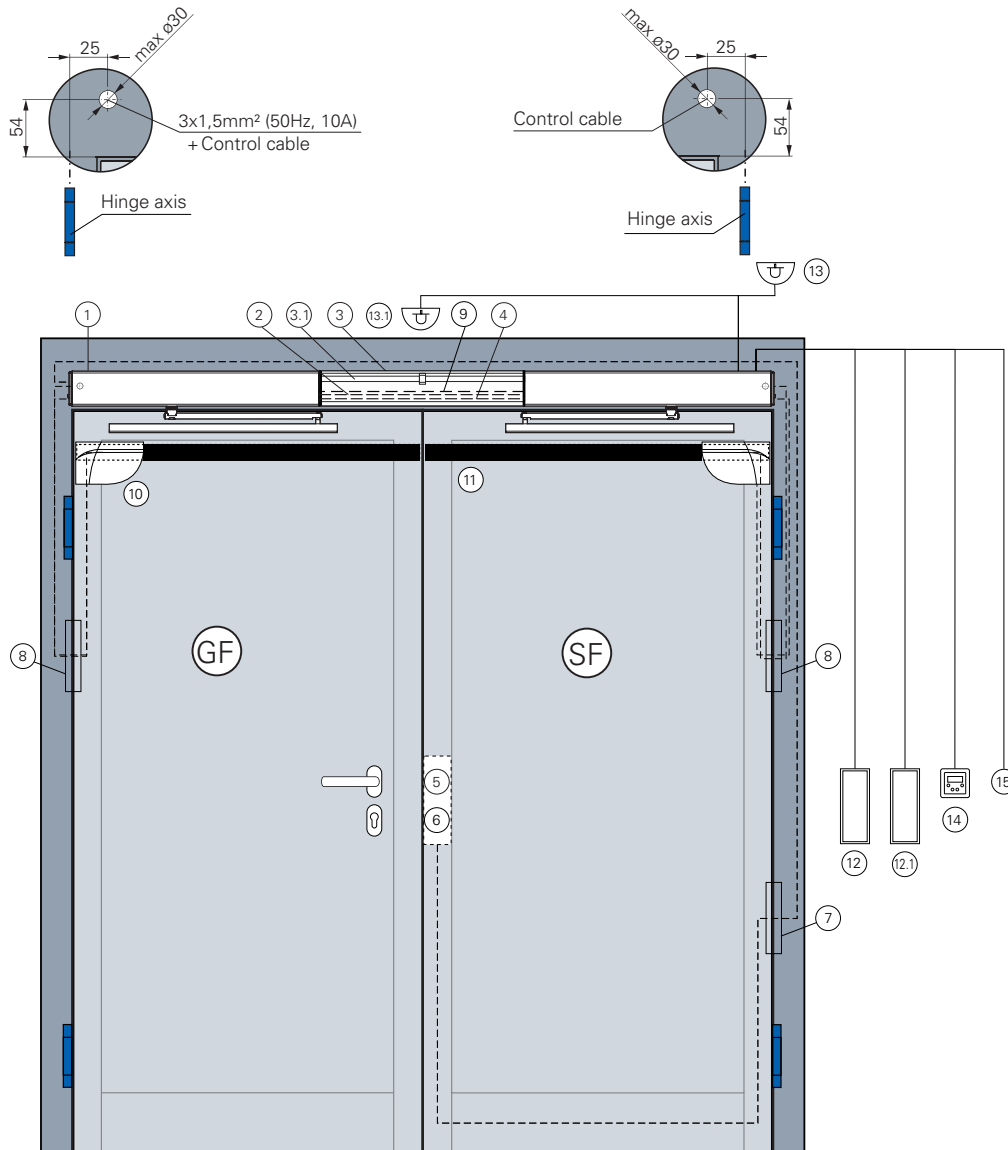
GSZ = Version for slide rails pulling (normal mounting on opposite hinge side)

IRM = Integrated smoke sensor

SRI = Integrated door control



| Pos. | Designation                                       | Cable                                  | Note  |
|------|---|--|---|
| 1    | Power supply                                      | NYM 3 x 1,5mm <sup>2</sup>             | Motor needs a power supply of 230 V   |
| 2    | E-Strike 24V DC 100% ED, protection diode         | J-Y(ST)Y 4 x 0,6 or 0,8mm <sup>2</sup> | Cable laying by customer  |
| 3    | Dead bolt switch contact                          | J-Y(ST)Y 4 x 0,8mm <sup>2</sup>        | Cable laying by customer  |
| 4    | Concealed cable transition                        | for safety element                     | As option, on site  |
| 5    | Flatscan set                                      | Cable by ECO                           | Concealed cable transition by customer, otherwise, the cable laying will be made on the surface with cable transition |
| 5.1  | Sensor bar set                                    | Cable by ECO                           | Concealed cable transition by customer, otherwise, the cable laying will be made on the surface with cable transition |
| 6    | Large surface button (inside)                     | J-Y(ST)Y 4 x 0,6 or 0,8mm <sup>2</sup> | Flush-mounting box, cable laying by the customer  |
| 6.1  | Large surface button (outside)                    | J-Y(ST)Y 4 x 0,6 or 0,8mm <sup>2</sup> | Flush-mounting box, cable laying by the customer  |
| 7    | Radar (inside) e.g. BS – (50 cm above the hinges) | J-Y(ST)Y 4 x 0,6 or 0,8mm <sup>2</sup> | Cable laying by the customer (flush-mounted if necessary)   |
| 7.1  | Radar (outside) e.g. BGS – (Middle of the door)   | J-Y(ST)Y 4 x 0,6 or 0,8mm <sup>2</sup> | Cable laying by the customer (flush-mounted if necessary)   |
| 8    | Bedix-program selector switch                     | J-Y(ST)Y 4 x 0,6 or 0,8mm <sup>2</sup> | Flush-mounting box, cable laying by the customer  |
| 9    | Alternative control device                        | J-Y(ST)Y 4 x 0,6 or 0,8mm <sup>2</sup> | Flush-mounting box, cable laying by the customer  |



| Pos. | Description   | Cable   | Note  |
|------|---|---|---|
| 1    | Power supply active leaf (GF)   | NYM 3 x 1,5mm <sup>2</sup>  | Both motors must be supplied with 230 V   |
| 2    | Power supply bridge to passive leaf (SF)  | NYM 3 x 1,5mm <sup>2</sup>  | Bridge for the power supply of the passive leaf   |
| 3    | Middle cover  | –   | As option   |
| 3.1  | Closing sequence control (SRI)  | Closing sequence control  | As option, closing sequence control   |
| 4    | System cable for controlling the closing sequence control (for T0 doors) and communication of the doors | Scope of delivery ECO (system cable)  | Cable laying in the frame (by customer) or in the continuous drive casing (as option)                                 |
| 5    | E-Strike 24V DC 100 % ED, protective diode  | 4 x 0,6 or 0,8mm <sup>2</sup><br>Laying to the Master                                       | Cable laying by customer in the passive leaf to the Master  |
| 6    | Dead bolt switch contact  | 4 x 0,8mm <sup>2</sup> laying to the Master   | Cable laying by customer in passive leaf to the Master  |
| 7    | Concealed cable transition  | For E-Strike and Dead bolt switch contact   | As option, by customer  |
| 8    | Concealed cable transition  | For safety elements   | As option, by customer  |
| 9    | ECO dual locking or E-Strike in the passive leaf  | For E-Strike 4 x 0,6mm <sup>2</sup><br>Laying to the Slave                                  | Cable laying by customer in the frame to the Slave-drive  |
| 10   | Flatscan set  | Cable supplied by ECO, laying to the Master-Active leaf / Laying to the Slave- Passive leaf | Concealed cable transition by customer, otherwise, the cable laying will be made on the surface with cable transition |
| 11   | Sensor bar set  | Cable supplied by ECO, laying to the Slave-Passive leaf / laying to the Master- Active leaf | Concealed cable transition by customer, otherwise, the cable laying will be made on the surface with cable transition |
| 12   | Large surface button (inside)   | 4 x 0,6 or 0,8mm <sup>2</sup> layin to the Slave  | Flush-mounting box, cable laying by the customer  |
| 12.1 | Large surface button (outside)  | 4 x 0,6 or 0,8mm <sup>2</sup> layin to the Slave  | Flush-mounting box, cable laying by the customer  |
| 13   | Radar (inside) e.g. BS – (50 cm above the hinges)   | 4 x 0,6 or 0,8mm <sup>2</sup> layin to the Slave  | Cable laying by the customer (flush-mounted if necessary)   |
| 13.1 | Radar (outside) e.g. BGS – (Middel of the door)   | 4 x 0,6 or 0,8mm <sup>2</sup> layin to the Slave  | Cable laying by the customer (flush-mounted if necessary)   |
| 14   | Bedix-program selector switch   | 4 x 0,6 or 0,8mm <sup>2</sup> layin to the Slave  | Flush-mounting box, cable laying by the customer  |
| 15   | Alternative control element   | 4 x 0,6 or 0,8mm <sup>2</sup> layin to the Slave  | Flush-mounting box, cable laying by the customer  |

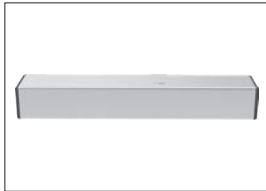


### Checklist for orders - ETS

| Pos. | Linkage type | Fire protection |    | Leafs |   | Bedix |    | Button |         | Radar  |         | Radio |    | Safety elements |                   |          | Emergency off |    | E-Strike |    | RSK* |    |  |
|------|--------------|-----------------|----|-------|---|-------|----|--------|---------|--------|---------|-------|----|-----------------|-------------------|----------|---------------|----|----------|----|------|----|--|
|      |              | yes             | no | 1     | 2 | yes   | no | inside | outside | inside | outside | yes   | no | Sensor bars     | Finger protection | Flatscan | yes           | no | yes      | no | yes  | no |  |
|      |              |                 |    |       |   |       |    |        |         |        |         |       |    |                 |                   |          |               |    |          |    |      |    |  |
|      |              |                 |    |       |   |       |    |        |         |        |         |       |    |                 |                   |          |               |    |          |    |      |    |  |
|      |              |                 |    |       |   |       |    |        |         |        |         |       |    |                 |                   |          |               |    |          |    |      |    |  |
|      |              |                 |    |       |   |       |    |        |         |        |         |       |    |                 |                   |          |               |    |          |    |      |    |  |
|      |              |                 |    |       |   |       |    |        |         |        |         |       |    |                 |                   |          |               |    |          |    |      |    |  |
|      |              |                 |    |       |   |       |    |        |         |        |         |       |    |                 |                   |          |               |    |          |    |      |    |  |
|      |              |                 |    |       |   |       |    |        |         |        |         |       |    |                 |                   |          |               |    |          |    |      |    |  |

\*Dead bolt switch contact

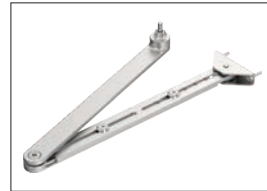
#### Hardware



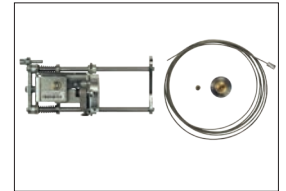
Drive



Slide rail



Standard arm



Integrated closing sequence control (SRI)

#### Control elements



Bedix (external control and programming element)



Large surface button GFT



Radar

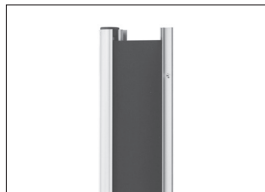


Set for radio

#### Safety elements



Sensor bars



Finger protection

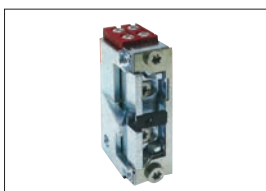


Flatscan

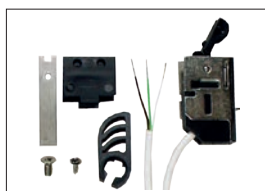


Emergency buttons

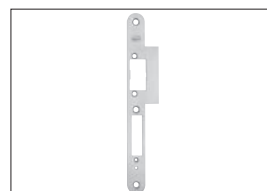
#### Lock accessories



E-Strike



Dead bolt switch contact



Strike plate



Motor locks

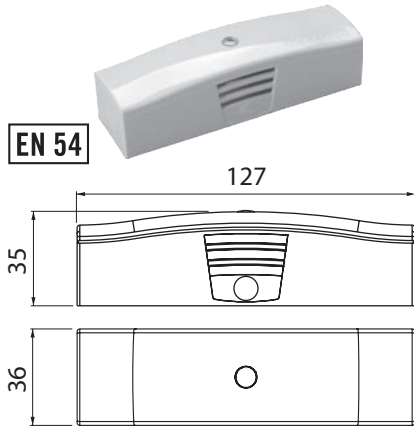




## **ECO Schulte** **Global confidence.**

All over the world, wherever people value quality, reliability and safety, ECO Schulte products have been in use for many years. The combination of functionality and design have brought the ECO systems international recognition.

At this point we would like to say thank you for the global confidence that has been shown in ECO Schulte products. We see this as a challenge to continue to satisfy the demands of our customers and the market through constant development and carefully tailored production.



### Smoke switch ORS 142 ECO (Lintel mounting)

- For use as separate lintel detector or as spare part (board) for the ECO FSA
- **Function:** Scattered light
- **Alarm level adjustment:** acc. to EN 54 part 7
- **Response level temperature:**  $70 \pm 5^\circ \text{C}$
- **Operating voltage:** 18 to 24 V DC
- **Power consumption:** at 28 V DC Max. 22 mA
- **Degree of protection:** IP 42
- **Ambient temperature:** -20 up to  $+75^\circ \text{C}$
- Incl. Cover RZO

| ORS 142 ECO (Lintel detector) | Colour          | Article number |
|-------------------------------|-----------------|----------------|
| Smoke switch ORS 142 ECO      | Silver RAL 9006 | 5030022730     |
| Smoke switch ORS 142 ECO      | White RAL 9016  | 3550005722     |



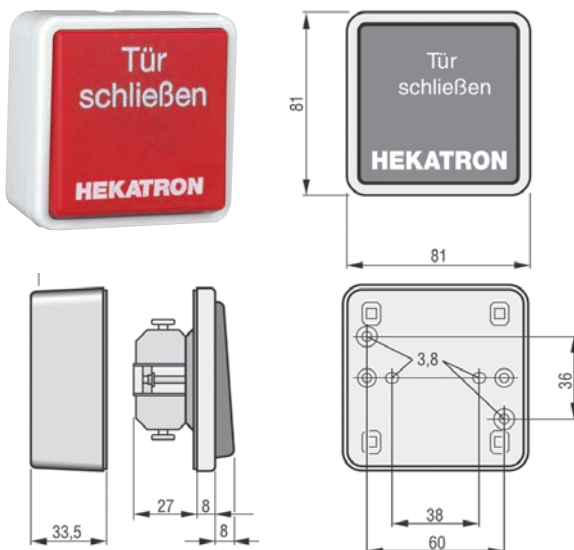
### ORS 142 Set

- With cable monitoring as option acc. to DIN EN 14637

Set consists of:

- 2 x ORS 142
- 2 x Base 143 A
- 1 x Terminating resistor AM 142

| Ceiling smoke switch | Colour         | Article number |
|----------------------|----------------|----------------|
| ORS 142 Set          | White RAL 9010 | 5030042530     |



### HAT 02

Hand-operated button for mounting in dry environments, for the manual activation of hold-open mechanisms in accordance with DIBt guidelines

- **Mounting:** On-wall / flush
- **Relay contact:** Opener
- **Switching voltage:** 30 V DC
- **Switching current:** Max. 1 A
- **Protection type:** IP 20
- **Note:** For applications with cable monitoring in accordance with EN 14637 (e.g. for ECO FAS III), the AM 142 terminating module must also be ordered.

| Manual release button | Article number |
|-----------------------|----------------|
| HAT 02                | 5030000748     |
| AM 142                | 5030015352     |

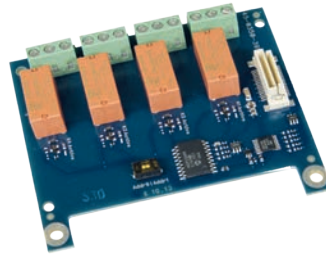
## ETS Accessories

### Relay board (RSP)

Relay board (plug-in board) for retrofitting to the control system of ETS 42. Freely configurable relays for controlling acoustic or optical signalling devices or signalling door states (e.g. opened, closed, locked, error)

- Can be mounted retrospectively

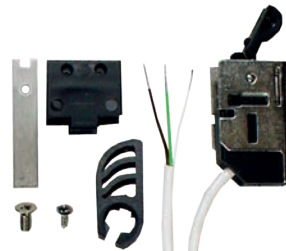
| Relay board | Article number |
|-------------|----------------|
| RSP         | 5030014720     |



### Dead bolt switch contact (RSK)

Dead bolt switch contact for installation in the strike plate. Switches off the power unit as soon as the lock is mechanically locked. This prevents a failure of the power unit when locking. Includes 6m cable.

| Dead bolt switch contact       | Article number |
|--------------------------------|----------------|
| Dead bolt switch contact (RSK) | 5030019315     |



### Standard E-Strike with smoke protection approval

For the use on smoke protection doors or doors without fire protection requirements. E-Strike with red connection blocks are designed for 12 or 24 Volt (each  $\pm 15\%$ ) continuous operation.

| Standard E-Strike with smoke protection approval | Article number |
|--|----------------|
| A-5002-B   | 5030014724     |
| A-5002-FB (Latch guidance)                       | 5030023741     |



### Fire protection E-Strike

For the use on doors with fire protection requirements. E-Strikes with red connection blocks are designed for 12 or 24 Volt (each  $\pm 15\%$ ) continuous operation.

| Fire protection E-Strike   | Article number |
|----------------------------|----------------|
| FT-502-B                   | 5030014726     |
| FT-502-FB (Latch guidance) | 5030036502     |



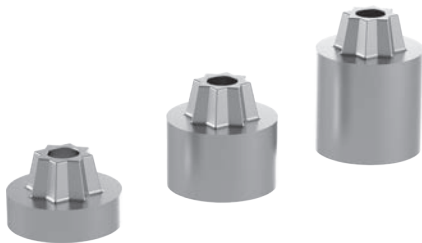


Mounting plate for ETS 73 / ETS 64-R

**Mounting plate for ETS (MPL)**

Necessary for use in fire protection and for mounting on walls or narrow frame facings.

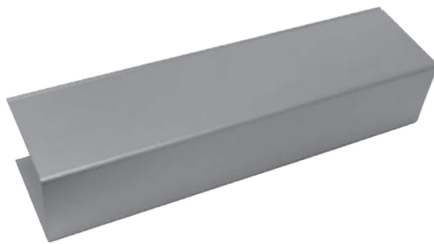
| Mounting plate        | Article number  |
|-----------------------|-----------------|
| MPL ETS 73 / ETS 64-R | 358500450548358 |



**Clamping pieces (Axis extension)**

For use with special mountings

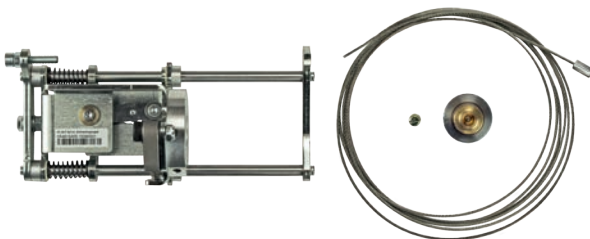
| Clamping piece (axis extension) | Article number |
|---------------------------------|----------------|
| AVE 10 (+ 10mm, incl. screw)    | 5030054517     |
| AVE 20 (+ 20mm, incl. screw)    | 5030054519     |
| AVE 30 (+ 30 mm, incl. screw)   | 5030054520     |



**Middle casing set**

consisting of assembly profile, stainless steel cladding and accessories. Set 1 1.200 mm long for two-leaf doors up to 2.600 mm.

| Casing      | Total length | Article number  |
|-------------|--------------|-----------------|
| V-ETS 73/64 | 1.200 mm     | 358500450548214 |
| V-ETS 42    | 780 mm       | 5030055468      |



**Integrated closing sequence control (SRI)**

Assembly set for retrofitting an ETS 64-R double-leaf catch system with an integrated, mechanical closing sequence control. Approved by the DIBt. (Middle casing set necessary).

| Integrated closing sequence control | Article number |
|-------------------------------------|----------------|
| SRI                                 | 5030025059     |



**Operating device D-BEDIX for ETS**

With the D-BEDIX, the different types of operation can be chosen directly. In addition, the most important door settings can be implemented with ease. The display clearly shows the types of operation, menu settings and possible faults.

| Operating device                  | Article number |
|-----------------------------------|----------------|
| D-Bedix, flush mounting           | 5030024838     |
| Surface-mounted frame for D-Bedix | 5030026428     |
| Combi-Bedix, flush mounting       | 5030035366     |
| Combi-Bedix, surface mounting     | 5030037345     |



**Large surface button (GFT)**

- Function door "OPEN"
- Operating voltage 250 V AC / 30 V DC
- Power consumption max. 10 A AC / 2 A DC
- Degree of protection IP 40
- 174 x 93 mm

| Large surface button | Colour              | Article number |
|----------------------|---------------------|----------------|
| GFT ECO AP/UP        | White like RAL 9016 | 5030045153     |



**Contactless surface switch (BFT)**

- also for exterior application
- Protection type IP 65
- responds at a proximity of around 10 cm or less
- incl. 80 x 80mm stainless steel plate
- indirectly illuminated (24V from the ETS)
- vandalism-proof

| Contactless surface switch  | Article number |
|---|----------------|
| BFT (flush-mounted)   | 5030024865     |
| BFT (surface-mounted, incl. stainless steel surface mounting box) | 5030024866     |



**Contactless motion detector (Magic Switch)**

- only for interior applications
- responds from 10 to 50 cm
- Adjustment of detection field by potentiometer
- incl. 84 x 84mm nylon cover
- suitable for flush-mounted assembly

| Contactless motion detector                | Article number |
|--|----------------|
| Magic Switch (white with hand symbol)      | 5030033582     |
| Surface mount box for Magic Switch (white) | 5030034181     |





**Radar "Eagle One"**

Radar motion detector as the opening impulse provider for automatic doors, identifies direction. Incl. 5 m prepared connection cable.

| Radars                        | Article number |
|-------------------------------|----------------|
| Radars BEA "Eagle One" black  | 5030027729     |
| Radars BEA "Eagle One" white  | 5030049467     |
| Radars BEA "Eagle One" silver | 5030055077     |
| ORA rain hood for "Eagle One" | 5030033583     |



**Radio set for ETS**

For the remote control of the motor, for disabled-friendly opening of the door.

Remote print for easy insertion on the control board of the ETS.

Handheld radio transmitter with a range of up to 10 m.

| Remote control                                  | Article number |
|---|----------------|
| Flush mounted / built-in radio receiver RCJ01   | 5030026336     |
| Built-in radio receiver RTS03 (e.g. in GFT-ECO) | 5030026335     |
| 4 channel hand transmitter (for RCJ01)          | 5030049002     |



**Key switch for ETS**

For one time release of the drive, e.g. for night function. The door-open time can be adjusted from 0 to 180 sec. (Version for surface mounting with IP44).

Profile half cylinder by customer.

| Key switch       | Article number |
|------------------|----------------|
| ST-02 UP         | 5030055331     |
| ST-03 AP (IP 44) | 5030029467     |



**Program switch for ETS**

To set the functions "automatic- night- manual- continuous open"

Mechanical, four-position locking toggle switch, not lockable, for inside applications only, suitable for surface and flush mounting. Colour white (matt).

| Program switch | Article number |
|----------------|----------------|
| PRS-04-AP/UP   | 5030055198     |

### Sensor strips

Active infrared safety sensor for automatic doors.  
Secures the movement area. Stops or reverses when obstacles are identified.

- Incl. cable and external, flexible cable transition.
- **Set III** consisting of 2 sensor strips per leaf (BEA), up to max. 1.200 mm
- **Set IV** consisting of 2 sensor strips per leaf (BEA), up to max. 1.600 mm

| Sensor strips   | Article number |
|---|----------------|
| Set III   | 5030019133     |
| Set IV  | 5030018592     |
| Rain cover hood (for outside deployment) with sensor bars up to 1100 mm | 5030030550     |
| Rain cover hood (for outside deployment) with sensor bars up to 1500 mm | 5030034175     |
| Fire protection doors adapter (6mm bore) (terminal block + slave cable) | 5030041660     |



**DIN 18650** **EN 16005**



Rain cover hood

### Flatscan

Sensor for swing doors to secure the entire width and height of the door leaf on the hinge side or opposite hinge side, as well as the secondary closing edge.

- Laser Scanner (to measure radiated light)
- Electricity supply 12 to 24 V AV DC ± 15%
- Power consumption ≤ 2W
- IP 54
- Dimensions: 142 x 55 x 23 mm
- Set consisting of 2 sensors, for hinge and opposite hinge sides

| Sensor       | Colour          | Article number |
|--------------|-----------------|----------------|
| Flatscan Set | White RAL 9010  | 5030033585     |
| Flatscan Set | Black RAL 9005  | 5030033586     |
| Flatscan Set | Silver RAL 9006 | 5030033584     |



**DIN 18650** **EN 16005**

### Flatscan protection

Protective cover against weather influences and radar radiation. The protective cover can be mounted or plugged in without dismantling the Flatscan.

| Sensor                        | Colour             | Article number |
|-------------------------------|--------------------|----------------|
| Flatscan protection DIN left  | Aluminium anodized | 5030053303     |
| Flatscan protection DIN right | Aluminium anodized | 5030053304     |
| Flatscan protection DIN left  | Black RAL 9005     | 5030053305     |
| Flatscan protection DIN right | Black RAL 9005     | 5030053306     |



**ECO Schulte GmbH & Co. KG**

Iserlohner Landstraße 89

D-58706 Menden

Telephone +49 2373 9276 - 0

Telefax +49 2373 9276 - 40

info@eco-schulte.de

www.eco-schulte.de

Your company imprint

**GO DIGITAL**

I'm also digital.

→ [bit.ly/2UQTKg2](https://bit.ly/2UQTKg2)

## ■ SYSTEM TECHNOLOGY FOR THE DOOR

