

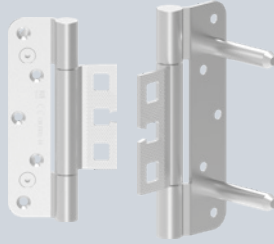
Hinge with RC-A hole pattern

Standard



OBX-18-2541/160-RC-A

With load-bearing stud (TZ)



OBX-18-2541/160-RC-A TZ

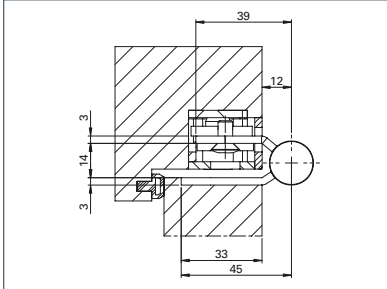
Description

ECO Horizon object hinge OBX-18-2541/160-RC-A

- For flush doors on wooden, steel or aluminium frames
- For OBX frame boxes adjustable in three dimensions
- Concealed, permanently mounted rotating axis, so no pin fixation required

- Wear- and maintenance-free ball bearing technology for absorbing radial and axial forces
- Perfectly closed hinge knuckle without cover head
- Suitable for burglar-resistant elements
- Suitable for use on FH doors
- DIN left/DIN right, can be used without conversion work
- EN 1935: Class 14 / 160 kg

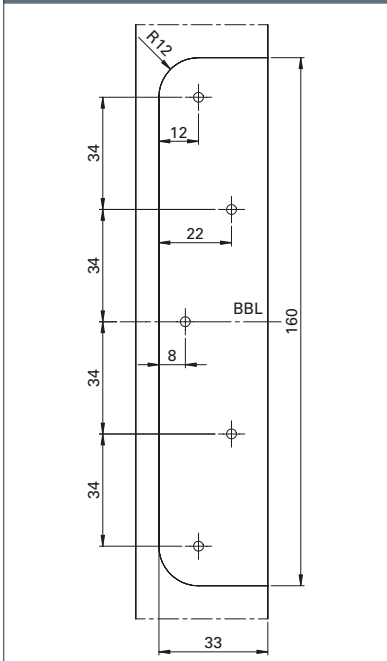
Cross-section standard



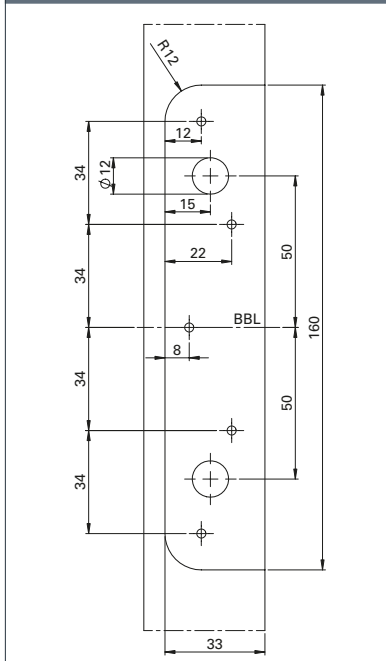
F **EN 1935** **CE** **ER**  Wooden door

OBX-18-2541/160-RC-A For flush doors	Dimensions	Art. no.
OBX-18-2541/160-RC-A ER	Ø 18 x 160 mm	5030054215
OBX-18-2541/160-RC-A TZ ER	Ø 18 x 160 mm	5030055296

Milling pattern standard



Milling pattern load-bearing stud (TZ)



ECO Schulte GmbH & Co. KG

Iserlohner Landstraße 89

D-58706 Menden

Telephone +49 2373 9276 - 0

Telefax +49 2373 9276 - 40

info@eco-schulte.de

www.eco-schulte.de

Our compendium represents a compilation of all products from our range of services. These are subject to different delivery classes. Special variants included are often manufactured to customer specifications and sometimes require longer delivery times and minimum purchase quantities. Further advise can be given by your contact person.

■ SYSTEM TECHNOLOGY FOR THE DOOR

