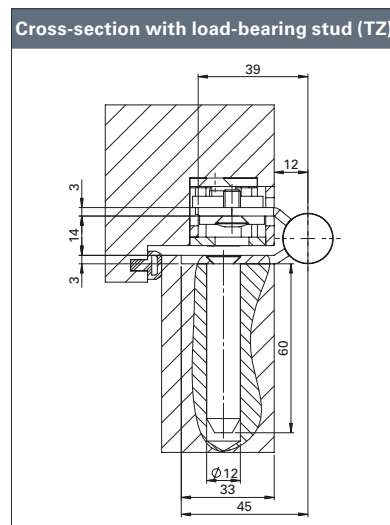
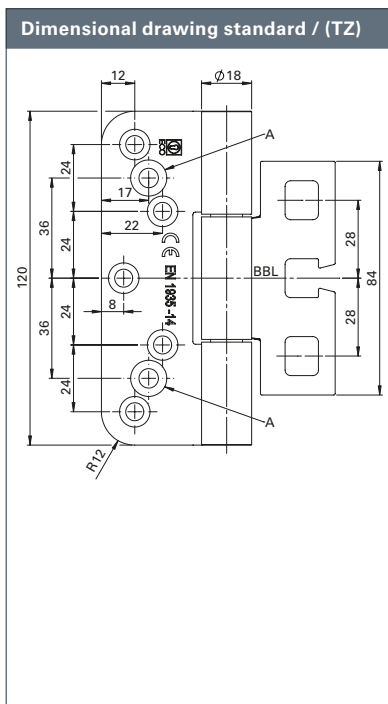

Performance criteria

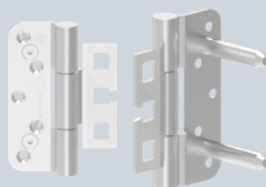
Size	120 mm	
Ø knuckle	18 mm	
Material thickness	3 mm	
Screws	Ø5 x 50 mm	
DIN-L / DIN-R	Yes	
Mill diameter	24 mm	
Milling length	120 mm	
Milling depth	3 mm	
Door types	Rebate	-
	Flush	Yes
Frame types	Wooden	Yes
	Steel	Yes
	Aluminium	Yes
Suitable for fire doors	F	Yes
Load-bearing class 14 (door weight)	EN 1935 CE	Yes
	according to standard	160 kg
	ECO load-bearing capacity	160 kg
Material	Stainless steel (ER)	Yes
Finishes	ER matt brushed	Yes
	ER polished	■
	PVD coating	■
	Powder coating in RAL shades	■
Frame boxes	Block frame	OBX-3101-3D
	Casing frame	OBX-3102-3D
		OBX-3106-3D
	Masking frame	OBX-3105-3D
	Steel frame	OBX-3011-3D
		OBX-3012-3D
	Aluminium frame	OBX-3121-3D

■ Yes - No ■ On request



Hinge with RC-A hole pattern
Standard


OBX-18-2541/120-RC-A

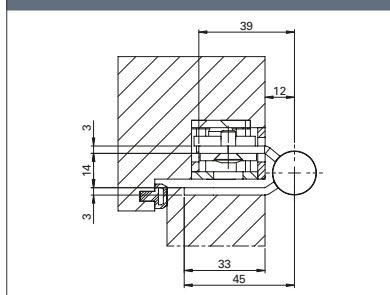
With load-bearing stud (TZ)


OBX-18-2541/120-RC-A TZ

Description
ECO Horizon object hinge OBX-18-2541/120-RC-A

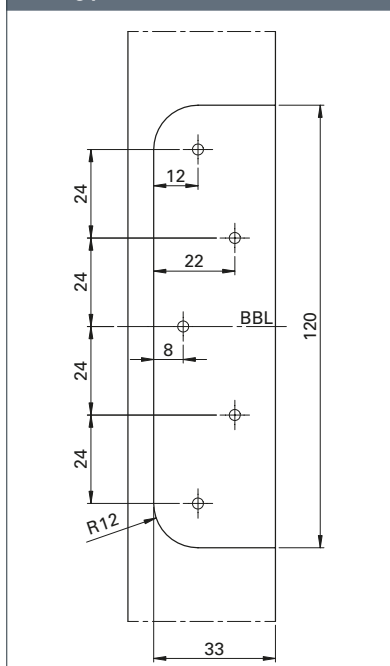
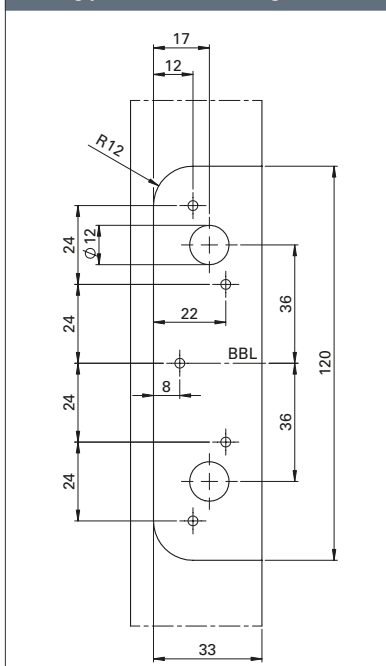
- For flush doors on wooden, steel or aluminium frames
- For OBX frame boxes adjustable in three dimensions
- Concealed, permanently mounted rotating axis, so no pin fixation required

- Wear- and maintenance-free ball bearing technology for absorbing radial and axial forces
- Perfectly closed hinge knuckle without cover head
- Suitable for burglar-resistant elements
- Suitable for use on FH doors
- DIN left/DIN right, can be used without conversion work
- EN 1935: Class 14 / 160 kg

Cross-section standard


F
EN 1935
CE
ER
Wooden door

OBX-18-2541/120-RC-A For flush doors	Dimensions	Art. no.
OBX-18-2541/120-RC-A ER	Ø 18 x 120 mm	5030054325
OBX-18-2541/120-RC-A TZ ER	Ø 18 x 120 mm	5030055309

Milling pattern standard

Milling pattern load-bearing stud (TZ)


ECO Schulte GmbH & Co. KG

Iserlohner Landstraße 89

D-58706 Menden

Telephone +49 2373 9276 - 0

Telefax +49 2373 9276 - 40

info@eco-schulte.de

www.eco-schulte.de

Our compendium represents a compilation of all products from our range of services. These are subject to different delivery classes. Special variants included are often manufactured to customer specifications and sometimes require longer delivery times and minimum purchase quantities. Further advise can be given by your contact person.

■ SYSTEM TECHNOLOGY FOR THE DOOR

