

Square spindles for standard handles



Square spindle (8 mm)

For standard fittings:

This is fixed in place using a grub screw with cupped gripping point (DIN 916). The screw presses against or into the spindle when tightened. Further spindle lengths available on request.

Article number	Square spindle	Length
900607.43	∅ 8 mm	60 mm
900584.43	∅ 8 mm	90 mm
900591.43	∅ 8 mm	100 mm
900594.43	∅ 8 mm	120 mm
900601.43	∅ 8 mm	140 mm

Square spindle (8.5 mm) ÖNORM standard

For standard fittings:

This is fixed in place using a grub screw with cupped gripping point (DIN 916). The screw presses against or into the spindle when tightened. Further spindle lengths available on request.

Article number	Square spindle	Length
900744.43	∅ 8.5 mm	110 mm
900745.43	∅ 8.5 mm	125 mm
900746.43	∅ 8.5 mm	137 mm

Square spindle (9 mm)



For standard fittings in the FS range:

This is fixed in place using a grub screw with cupped gripping point (DIN 916). The screw presses against or into the spindle when tightened. Spindle identified according to fire protection standard. Further spindle lengths available on request.

Article number	Square spindle	Length
900511.43	∅ 9 mm	60 mm
900571.43	∅ 9 mm	70 mm
900577.43	∅ 9 mm	100 mm
900581.43	∅ 9 mm	125 mm
900551.43	∅ 9 mm	140 mm

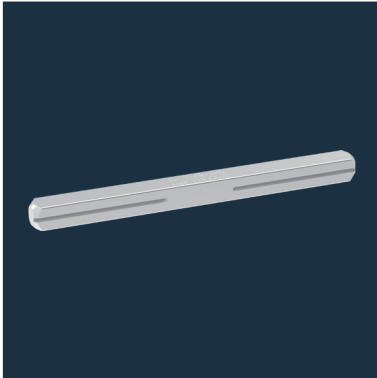
Square spindle (10 mm)

For standard fittings:

This is fixed in place using a grub screw with cupped gripping point (DIN 916). The screw presses against or into the spindle when tightened. Further spindle lengths available on request.

Article number	Square spindle	Length
901040.43	∅ 10 mm	113 mm
901041.43	∅ 10 mm	120 mm
901042.43	∅ 10 mm	125 mm
901043.43	∅ 10 mm	130 mm
901044.43	∅ 10 mm	145 mm

Square spindle with longitudinal groove



Square spindle with longitudinal groove (8 mm)

For a high-strength connection (spindle / lever handle) for fittings.

This is fixed in place using a grub screw with pin.

The pin cuts into the spindle groove.

Positioning required.

Further spindle lengths available on request.



Article number	Square spindle	Length
1317408143	∅ 8 mm	55
1317408543	∅ 8 mm	65
1317408343	∅ 8 mm	70
1317408943	∅ 8 mm	75
1317408743	∅ 8 mm	80
1317409143	∅ 8 mm	90
1317409343	∅ 8 mm	100
1317403543	∅ 8 mm	115
1317409443	∅ 8 mm	120
1317403743	∅ 8 mm	130
1317404143	∅ 8 mm	135
1317403943	∅ 8 mm	145
1317404343	∅ 8 mm	150
1317404543	∅ 8 mm	155
1317404743	∅ 8 mm	170

Square spindle with longitudinal groove (9 mm)

For a high-strength connection (spindle / lever handle) for fittings.

This is fixed in place using a grub screw with pin.

The pin cuts into the spindle groove. Positioning required.

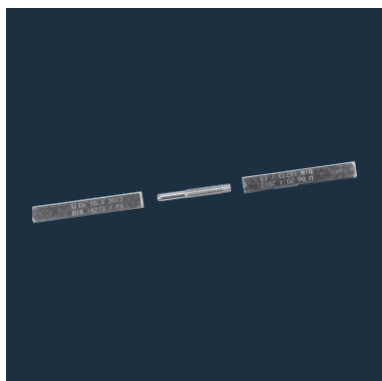
Spindle identified according to fire protection standard.

Further spindle lengths available on request.



Article number	Square spindle	Length
1317408243	∅ 9 mm	55
1317408643	∅ 9 mm	65
1317408443	∅ 9 mm	70
1317409043	∅ 9 mm	75
1317408843	∅ 9 mm	80
1317409243	∅ 9 mm	90
1317403643	∅ 9 mm	115
1317403843	∅ 9 mm	130
1317404243	∅ 9 mm	135
1317404043	∅ 9 mm	145
1317404443	∅ 9 mm	150
1317404643	∅ 9 mm	155
1317404843	∅ 9 mm	170

Panic spindles

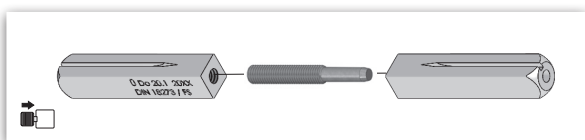
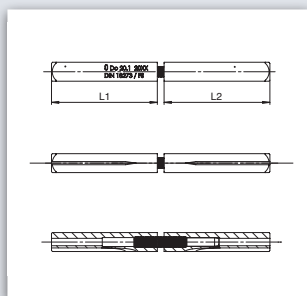


Panic spindle set (9 mm) F

For panic fittings using locks with split nut.

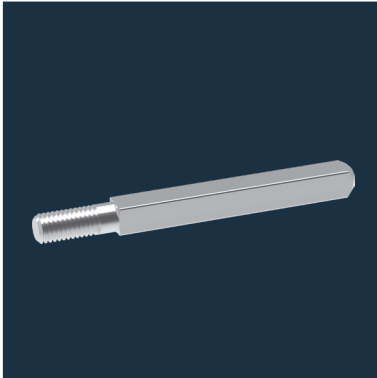
Further lengths available on request.
Set contains:

- Panic spindle L1
- Panic spindle L2
- Connecting screw
- Two set screws
- Spindles identified according to fire protection standard



Article number	Square spindle	Length (L1)	Length (L2)
901800.43	∅ 9 mm	40 mm	50 mm
901801.43	∅ 9 mm	40 mm	55 mm
901802.43	∅ 9 mm	40 mm	60 mm
901803.43	∅ 9 mm	40 mm	65 mm
901804.43	∅ 9 mm	40 mm	70 mm
901805.43	∅ 9 mm	40 mm	75 mm
901806.43	∅ 9 mm	40 mm	80 mm
901807.43	∅ 9 mm	40 mm	85 mm
901808.43	∅ 9 mm	45 mm	50 mm
901809.43	∅ 9 mm	45 mm	55 mm
901810.43	∅ 9 mm	45 mm	60 mm
901811.43	∅ 9 mm	45 mm	65 mm
901812.43	∅ 9 mm	45 mm	70 mm
901813.43	∅ 9 mm	45 mm	75 mm
901814.43	∅ 9 mm	45 mm	80 mm
901815.43	∅ 9 mm	45 mm	85 mm
901816.43	∅ 9 mm	50 mm	50 mm
901817.43	∅ 9 mm	50 mm	55 mm
901818.43	∅ 9 mm	50 mm	60 mm
901819.43	∅ 9 mm	50 mm	65 mm
901820.43	∅ 9 mm	50 mm	70 mm
901821.43	∅ 9 mm	50 mm	75 mm
901822.43	∅ 9 mm	50 mm	80 mm
901823.43	∅ 9 mm	50 mm	85 mm
901824.43	∅ 9 mm	56 mm	55 mm
901825.43	∅ 9 mm	56 mm	60 mm
901826.43	∅ 9 mm	56 mm	65 mm
901827.43	∅ 9 mm	56 mm	70 mm
901828.43	∅ 9 mm	56 mm	75 mm
901829.43	∅ 9 mm	56 mm	80 mm
901830.43	∅ 9 mm	56 mm	85 mm
901831.43	∅ 9 mm	60 mm	60 mm
901832.43	∅ 9 mm	60 mm	65 mm
901833.43	∅ 9 mm	60 mm	70 mm
901834.43	∅ 9 mm	60 mm	75 mm
901835.43	∅ 9 mm	60 mm	80 mm
901836.43	∅ 9 mm	60 mm	85 mm
901837.43	∅ 9 mm	65 mm	65 mm
901838.43	∅ 9 mm	65 mm	70 mm
901839.43	∅ 9 mm	65 mm	75 mm
901840.43	∅ 9 mm	65 mm	80 mm
901841.43	∅ 9 mm	65 mm	85 mm

Handle/knob spindles



Handle/knob spindle (8 mm)

For knob/lever fittings, the spindle is screwed into the fitting (handle plate/knob) at least 8 mm deep. Do not tighten as this can compromise the function of the counter fitting. This is fixed in place using a grub screw with cupped gripping point (DIN 916). Further spindle lengths available on request.

Article number	Square spindle	Length
900557.43	∅ 8 mm	65 mm
900680.43	∅ 8 mm	90 mm
900681.43	∅ 8 mm	105 mm
900683.43	∅ 8 mm	120 mm
900684.43	∅ 8 mm	130 mm

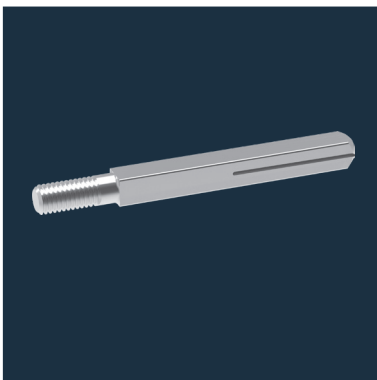
Handle/knob spindle (9 mm)

For knob/lever fittings, the spindle is screwed into the fitting (handle plate/knob) at least 8 mm deep. Do not tighten as this can compromise the function of the counter fitting. This is fixed in place using a grub screw with cupped gripping point (DIN 916). Spindle identified according to fire protection standard. Further spindle lengths available on request.



Article number	Square spindle	Length
900686.43	∅ 9 mm	80 mm
900688.43	∅ 9 mm	90 mm
900689.43	∅ 9 mm	101 mm
900691.43	∅ 9 mm	110 mm
900693.43	∅ 9 mm	125 mm

Handle/knob spindle with longitudinal groove



Handle/knob spindle with longitudinal groove (8 mm)

For knob/lever fittings, the spindle is screwed into the fitting (handle plate/knob) at least 8 mm deep. Do not tighten as this can compromise the function of the counter fitting. This is fixed in place using a grub screw with pin. The pin cuts into the spindle groove. Positioning required. Further lengths available on request.

Article number	Square spindle	Length
	∅ 8 mm	65 mm
	∅ 8 mm	90 mm
	∅ 8 mm	105 mm
	∅ 8 mm	120 mm
	∅ 8 mm	130 mm

Handle/knob spindle with longitudinal groove (9 mm)

For knob/lever fittings, the spindle is screwed into the fitting (handle plate/knob) at least 8 mm deep. Do not tighten as this can compromise the function of the counter fitting. This is fixed in place using a grub screw with pin. The pin cuts into the spindle groove. Positioning required. Spindle identified according to fire protection standard. Further spindle lengths available on request.



Article number	Square spindle	Length
	∅ 9 mm	80 mm
	∅ 9 mm	90 mm
	∅ 9 mm	101 mm
	∅ 9 mm	110 mm
	∅ 9 mm	125 mm

Barrel handle/knob spindle with longitudinal groove



Barrel handle/knob spindle with longitudinal groove (8 mm)

For knob/lever fittings with M12 knob thread. The barrel handle/knob spindle is screwed into the fitting (handle plate / knob) and tightened with a size 14 spanner (or the enclosed installation kit). This is fixed in place using a grub screw with pin. The pin cuts into the spindle groove. Positioning required. Further spindle lengths available on request.



Article number	Square spindle	Length
17406643	∅ 8 mm	75
17407043	∅ 8 mm	80
17407443	∅ 8 mm	85
17407843	∅ 8 mm	105

Barrel handle/knob spindle with longitudinal groove (9 mm)

For knob/lever fittings with M12 knob thread. The barrel handle/knob spindle is screwed into the fitting (handle plate / knob) and tightened with a size 14 spanner (or the enclosed installation kit). This is fixed in place using a grub screw with pin. The pin cuts into the spindle groove. Positioning required. Spindle identified according to fire protection standard. Further spindle lengths available on request.



Article number	Square spindle	Length
17406743	∅ 9 mm	75
17407143	∅ 9 mm	80
17407543	∅ 9 mm	85
17407943	∅ 9 mm	105

Hook handle/knob spindle



Hook handle/knob spindle

- Steel zinc-plated
- For doors drilled on one side
- Suitable for grub screws with cupped gripping point

Article number	Square spindle	Length
1090038243 *	∅ 9 mm	L = 57 mm
109003794300030	∅ 8 mm	L = 60 mm
1090038343 *	∅ 9 mm	L = 65 mm
1090038143 *	∅ 9 mm	L = 75 mm
109003784300030	∅ 8/10 mm	L = 60 mm

*with eccentric bore

Accessories



Rivet-down nut for oval rose half handle set

Article number	Model
1091050446	Filko blind rivet-down nut, material: 1.4031 Dimensions: M5C/ROKS 2.5



Screw bag set for handle on short plate (K)

Set includes screws and sleeve nuts for lever handle/lever handle (2 screws & 2 sleeve nuts) or knob/lever fitting (2 screws & 1 sleeve nut)

Article number	Model
10916050	D/D – Door thickness 38–45 mm
10916000	D/D – Door thickness 40–66 mm
10916051	WSG – Door thickness 38–45 mm
10916001	WSG – Door thickness 40–66 mm



Screw bag set for roses (ROS)

Set includes screws and sleeve nuts for lever handle/lever handle (4 screws & 4 sleeve nuts) or knob/lever fitting (4 screws & 2 sleeve nuts)

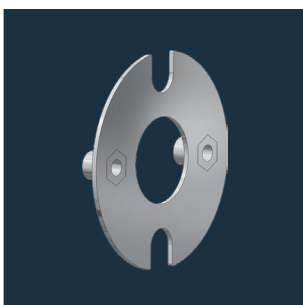
Article number	Model
10916058	D/D • Door thickness 38–45 mm
10916004	D/D • Door thickness 40–66 mm
10916055	WSG • Door thickness 38–45 mm
10916005	WSG • Door thickness 40–66 mm



BB insert accessory set

Set includes BB insert for PZ hole pattern with key and mounting screw

Article number	Model
10913641	KS-BB insert accessory set with 84 mm key, no. 1, forend screw
10913642	KS-BB insert accessory set with 84 mm key, no. 2, forend screw
10913643	KS-BB insert accessory set with 84 mm key, no. 3, forend screw
10913644	KS-BB insert accessory set with 84 mm key, no. 4, forend screw
10913645	KS-BB insert accessory set with 84 mm key, no. 5, forend screw
10913646	KS-BB insert accessory set with 84 mm key, no. 6, forend screw
10913647	KS-BB insert accessory set with 84 mm key, no. 7, forend screw
10913648	KS-BB insert accessory set with 84 mm key, no. 8, forend screw
10913649	KS-BB insert accessory set with 84 mm key, no. 9, forend screw
10913640	KS-BB insert accessory set with 84 mm key, no. 10, forend screw

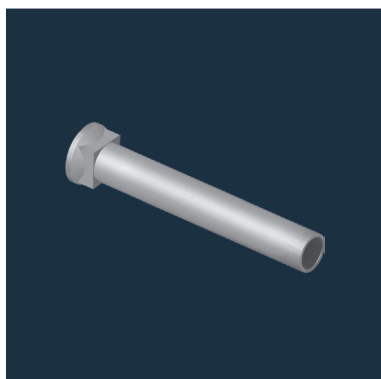


Fastening rose

Fastening rose ER supporting cams, steel zinc-plated

Article number	Model
10910700.46	For one-sided fixing of half handle sets with 38 mm pitch. Supporting cam Ø 7 x 8 mm with M5 screw thread. The fastening rose is inserted into the lock recess with the mortise lock.

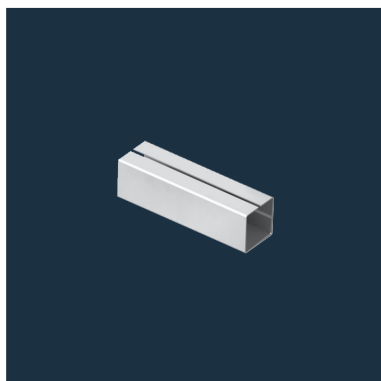
Sleeves



Sleeve nut

For screwing through handles.
Steel zinc-plated, M5 inner thread with 6.22 mm pressure-forged square.

Article number	Model
910251.43	10 mm
910252.43	15 mm
910254.43	20 mm
910275.43	24 mm
910120.43	30 mm
910130.43	40 mm



9 mm compensating sleeve on 8 mm square

For reducing square cross sections.
Steel zinc-plated, longitudinal slot

Article number	Length
930351	15 mm
930363	30 mm

8.5 mm compensating sleeve on 8 mm square

For reducing square cross sections.
Steel zinc-plated, longitudinal slot

Article number	Length
930355	28 mm

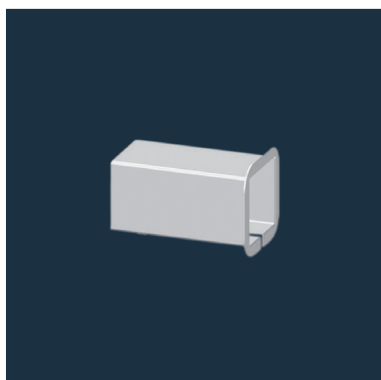
Compensating sleeves are not permitted for fire protection handles!

8 mm compensating sleeve on 7 mm square

For reducing square cross sections.
Steel zinc-plated, longitudinal slot

Article number	Length
930364	15 mm

Compensating sleeves are not permitted for fire protection handles!



9 mm compensating sleeve with collar on 8 mm square

For reducing square cross sections.
Steel zinc-plated, longitudinal slot

Article number	Length
930372	30 mm

Compensating sleeves are not permitted for fire protection handles!

9 mm compensating sleeve with collar on 8.5 mm square

For reducing square cross sections.
Steel zinc-plated, longitudinal slot

Article number	Length
930362	18 mm

Compensating sleeves are not permitted for fire protection handles!

8.5 mm compensating sleeve with collar on 8 mm square

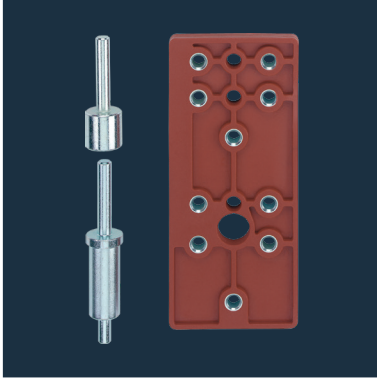
For reducing square cross sections.
Steel zinc-plated, longitudinal slot

Article number	Length
930355	28 mm

Compensating sleeves are not permitted for fire protection handles!



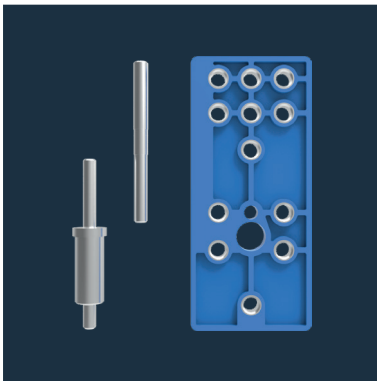
Drilling template / drilling jig



Drilling template with centring pin for room door fittings

Drilling template for nylon door fittings with roses or handles on short and long plates according to **DIN 1906 (DIN 18 225)** in BB, PZ, knob/lever or WC models. With steel drilling bushes for a drill diameter of 6.5 mm.

Article number	Model
5030026022	Drilling template for nylon door fittings



Drilling template with centring pin for room and fire protection handles

Drilling template for stainless steel and light metal door fittings with roses or short and long plate fittings according to **EN 1906 (DIN 18 255 and DIN 18273)** in BB, PZ, knob/lever or WC models. With steel drilling bushes for a drill diameter of 8.5 mm.

Article number	Model
5030017676	Drilling template for stainless steel and light metal door fittings



Pro drilling jig fitting

Suitable for all round rose, short plate, long plate and security handles. High-quality design made of anodised aluminium with hardened drilling bushes, centring pins (Ø 7 mm, Ø 8 mm, Ø 8.5 mm, Ø 9 mm and Ø10 mm) and HSS drills for drilling and reaming the mounting holes. All in a handy plastic case.

Article number	Model
5030064766	Pro drilling jig fitting with case and drill

Keys / cap lifters



Building key

ECO building key with square end, cylinder driver and measuring scale. For cylinder cut-out PZ. This master key can be used to open and close doors and windows when the door fitting has not yet been assembled. Made of nylon.

- Square pin key, 7–9 mm
- Driver for locks with cylinder cut-out
- With measuring scale (30–70 mm) for measuring the cylinder length

Article number	Model
109700100000010	RAL 7016 building key



WC + new-build key

(master key) with 8 mm inner square for unlocking WC doors, as well as an outer square (5–10 mm, tapered) for unlocking mortise locks without a lever handle set. Material: Zinc die casting.

Article number	Model
5030004884	WC + new-build key



Cap lifter

Special tool for easy removal of cover caps from assembled lever handle sets. Suitable for round roses, oval roses, and short and long plates. Steel zinc-plated, blade width 4 mm, with protective black nylon sheath.

Article number	Model
5030012880	Cap lifter

ECO Schulte GmbH & Co. KG

Iserlohner Landstraße 89

D-58706 Menden

Telephone +49 2373 9276 - 0

Telefax +49 2373 9276 - 40

info@eco-schulte.de

www.eco-schulte.de

Our compendium represents a compilation of all products from our range of services. These are subject to different delivery classes. Special variants included are often manufactured to customer specifications and sometimes require longer delivery times and minimum purchase quantities. Further advise can be given by your contact person.

■ SYSTEM TECHNOLOGY FOR THE DOOR

