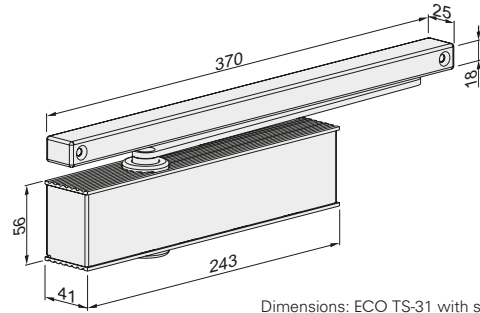
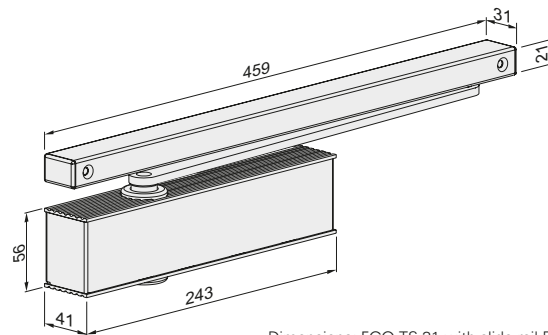


Performance criteria

Closing force (continuously adjustable)	according to EN standards	1 - 3
Door width	according to EN	≤ 950 mm ■
Dimensions (incl. mounting plate)	Length in mm	243
	Depth in mm	41
	Height in mm	56
Mounting plate in accordance with EN 1154 (supplementary sheet 1) with GS B		□
Hinge / hinge-opposite side		■
DIN L / R		■
Latching speed (continuously adjustable)		■
Closing speed (continuously adjustable)		■
Back check (constant)		-
Delayed action (continuously adjustable)		-
Tested to EN standards		EN 1154
Suitable for fire and smoke control doors		F
Certified according to EU regulations		CE



Dimensions: ECO TS-31 with slide rail K



Dimensions: ECO TS-31 with slide rail B

- Yes
- No
- Optional



Wooden door



Steel door



Profile door

ECO Newton TS-31 ■ Highlights at a glance



*optional

Details for the Newton highlights can be found at the beginning of this section.



Body: Silver RAL 9006
ECOcllic: Stainless steel satin finish



Body + ECOcllic: White RAL 9016



Body + ECOcllic: Black RAL 9005

Slide rails and lever arms are always delivered in the same colour as the body.

Order information

ECO **Newton** TS-31 ■ Slide rail closer

Product information

Closing force size 1–3, tested acc. to **EN 1154** (for door widths up to 950 mm), continuously adjustable. Latching speed and closing speed freely adjustable at the side. Same model for DIN L/R. Depth only 41 mm. Weight: 1.380g. Max. door opening angle: 180°

- **ECOunity:** The ECO **Newton** door closer portfolio covers all door dimensions with only two basic bodies. One model for all four mounting types
- **ECOphysis:** Door closer and slide rail form a positive-fit unit in aluminium and stainless steel
- **ECOcllic:** Stainless steel cover encloses the aluminium body with the strength of spring steel, thus concealing all setting parameters safely against unauthorised access
- **ECOvalve:** Simple, high-precision and permanently secure adjustment of all parameters of the closing process using a standard Allen key
- **ECOcover²:** Optional stainless steel cover for the ECO **Newton** door closer or slide rail. Order the lever arm in stainless steel for a harmonious overall appearance.
- **ECOgreen:** Intelligent design and carefully planned use of materials significantly help save resources
- **ECOline:** Slide rail and door closer are flush when completely installed. All materials are perfectly colour-matched – right through to the end caps on the slide rail K.
- **ECOvario:** Permits the use of all slide rail door closers and can even be combined with different door leaf widths. Thus an optimum price-performance ratio can be found for every individual door situation

New overall packaging:

TS-31 B: (Installation as per DIN hole group) Complete set incl. door closer body, slide rail B, square lever B, mounting plate, mounting instructions, paper template and fixing accessories.

TS-31 K: (Direct installation) Complete set incl. door closer body, slide rail K, square lever K, paper template and fixing accessories)

Article numbers

ECO **TS-31** EN 1–3



Closer body with lever arm and slide rail B	Colour		Art. no.	Closer body with lever arm, without slide rail	Colour		Art. no.
ECO TS-31 with GS-B	Silver	RAL 9006*	5030055218	ECO TS-31	Silver	RAL 9006*	5030015495
ECO TS-31 with GS-B	White	RAL 9016	5030015471	ECO TS-31	White	RAL 9016	On request
ECO TS-31 with GS-B	Black	RAL 9005	5030015477	ECO TS-31	Black	RAL 9005	5030034350

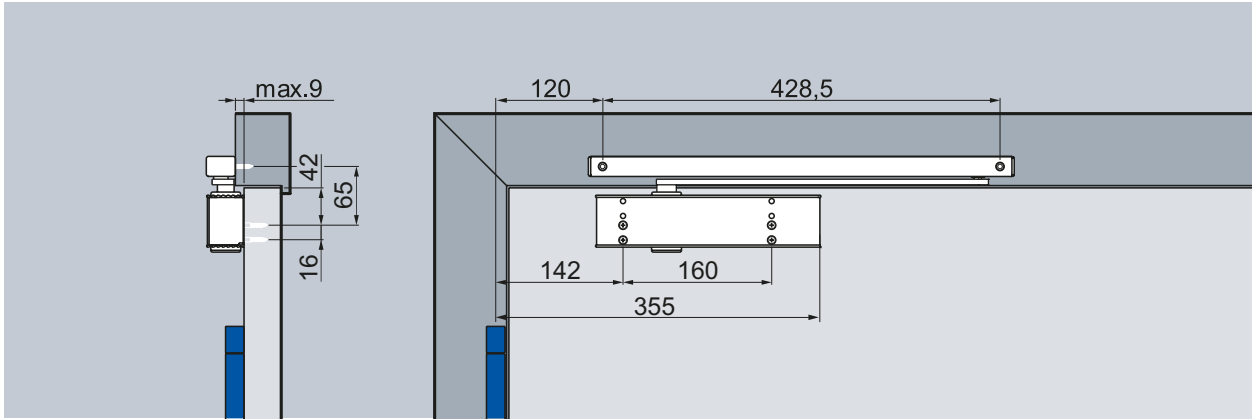


Closer body with lever arm and slide rail K	Colour		Art. no.
ECO TS-31 with GS-K	Silver	RAL 9006*	5030015461
ECO TS-31 with GS-K	White	RAL 9016	5030015475
ECO TS-31 with GS-K	Black	RAL 9005	5030015481

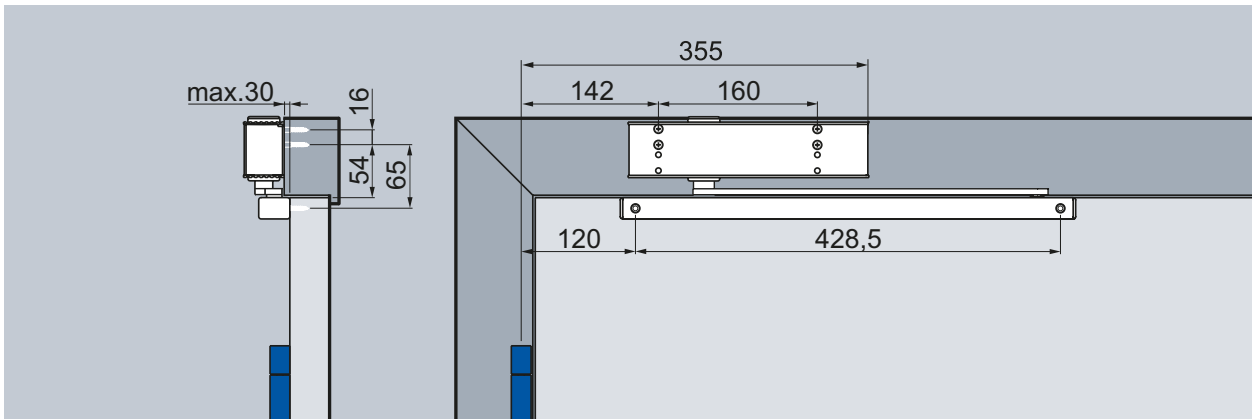
*Closer body unit in silver RAL 9006, ECOcllic in matt stainless steel

Hinge side

Installation with slide rail B, figure DIN L door, DIN R mirrored



Standard installation with slide rail B, hinge side (direct installation, with mounting plate)



Frame installation with slide rail B, hinge side (direct installation, with mounting plate)

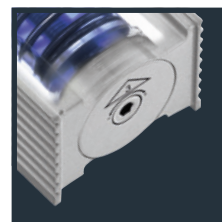
Closing speed

Continuously adjustable closing speed from 180°–0°.

Latching speed

Increases the closing speed and thus the closing force for safe closing of the door, e.g. to overcome door seals, latches and air pressure. Continuously adjustable, active from 10° – 0°.

Closing force diagram ECO **Newton TS-31**, hinge side



Closing force:

freely adjustable

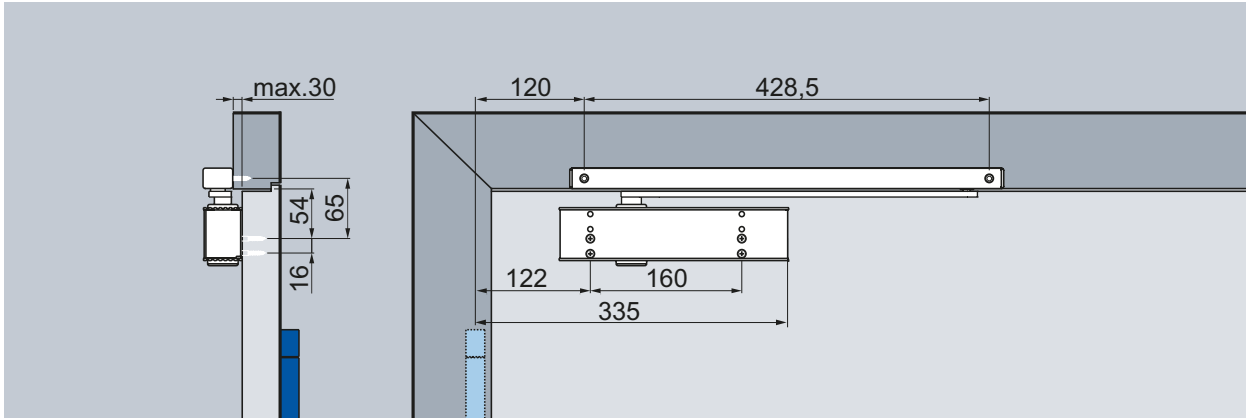
min. Size 1
max. Size 3

Delivery state:

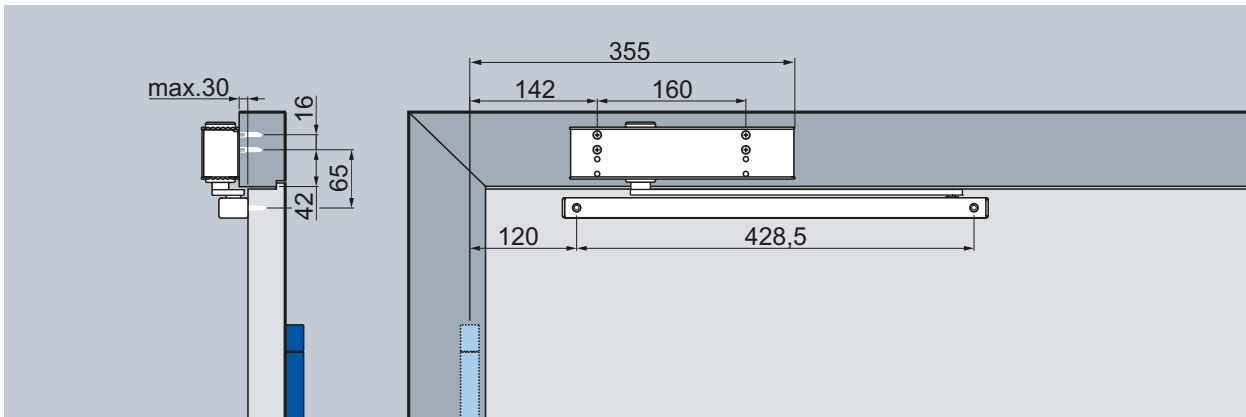
Size 3

Opposite hinge side

Installation with slide rail B, figure DIN R door, DIN L mirrored



Standard installation with slide rail B, opposite hinge side (direct installation, with mounting plate)



Frame installation with slide rail B, opposite hinge side (direct installation, with mounting plate)

Closing speed

Continuously adjustable closing speed from 140°* – 0°.

Latching speed

Increases the closing speed and thus the closing force for safe closing of the door, e.g. to overcome door seals, latches and air pressure. Continuously adjustable, active from 10° – 0°.

Closing force diagram ECO Newton TS-31, opposite hinge side

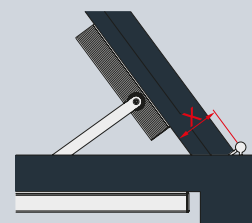


*Varies according to door thickness and hinge type.

Opening range must be limited by a door stop!

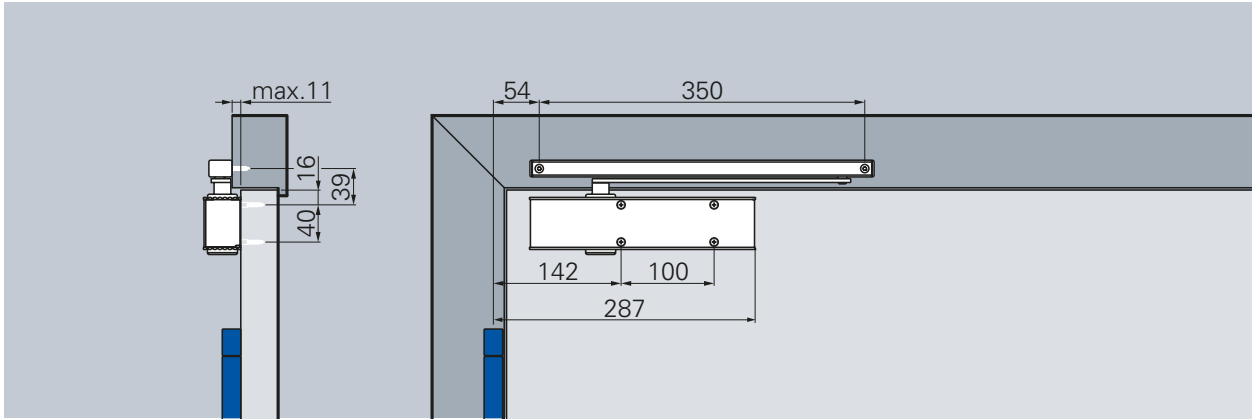
X = max. 95 mm!

(Please consult our technical support team in the event of deviations.)

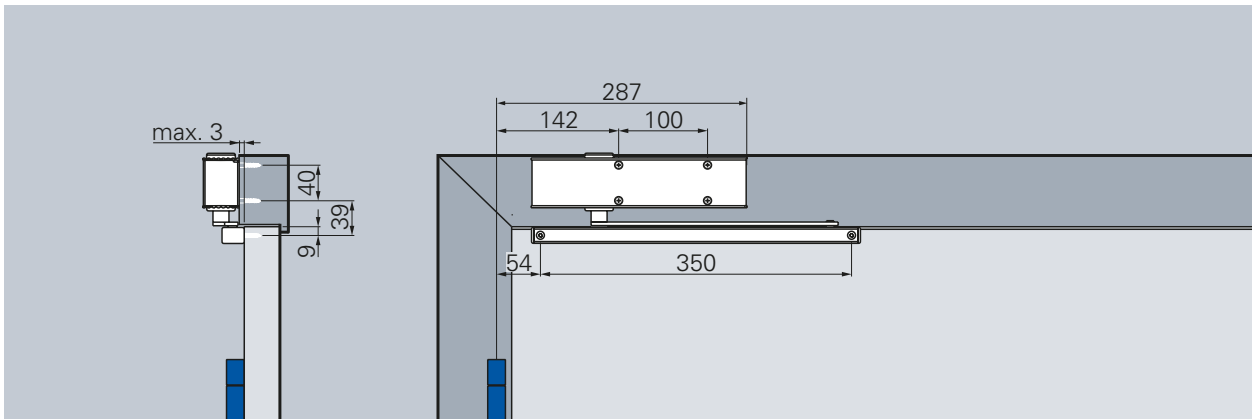


Hinge side

Installation with slide rail K, figure DIN L door, DIN R mirrored



Standard installation with slide rail K, hinge side (direct installation, without mounting plate)



Frame installation with slide rail K, hinge side (direct installation, without mounting plate)

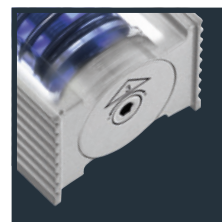
Closing speed

Continuously adjustable closing speed from 180°–0°.

Latching speed

Increases the closing speed and thus the closing force for safe closing of the door, e.g. to overcome door seals, latches and air pressure. Continuously adjustable, active from 10° – 0°.

Closing force diagram ECO **Newton TS-31**, hinge side



Closing force:

freely adjustable

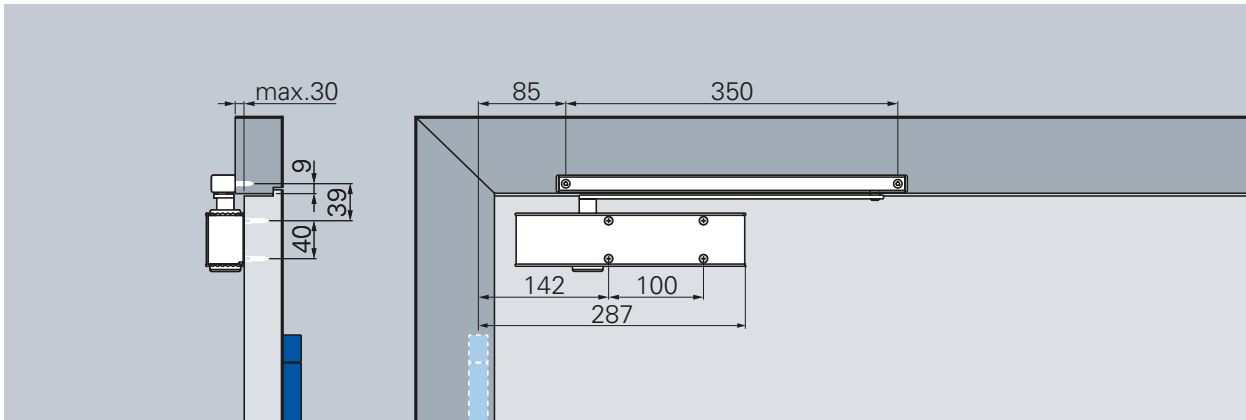
min. Size 1
max. Size 3

Delivery state:

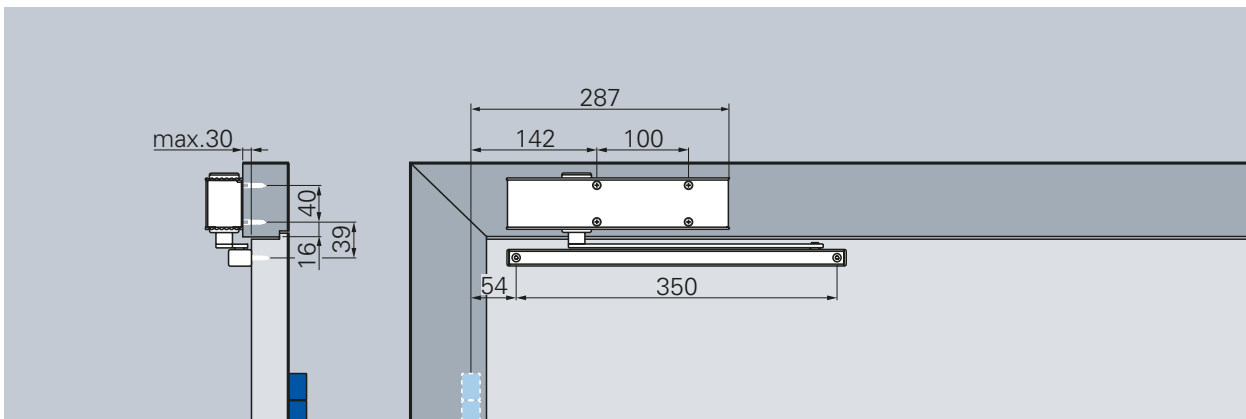
Size 3

Opposite hinge side

Installation with slide rail K, figure DIN R door, DIN L mirrored



Standard installation with slide rail K, opposite hinge side (direct installation, without mounting plate)



Frame installation with slide rail K, opposite hinge side (direct installation, without mounting plate)

Closing speed

Continuously adjustable closing speed from 140°* – 0°.

Latching speed

Increases the closing speed and thus the closing force for safe closing of the door, e.g. to overcome door seals, latches and air pressure. Continuously adjustable, active from 10° – 0°.

Closing force diagram ECO Newton TS-31, opposite hinge side



*Varies according to door thickness and hinge type.

Opening range must be limited by a door stop!

ECO Schulte GmbH & Co. KG

Iserlohner Landstraße 89

D-58706 Menden

Telephone +49 2373 9276 - 0

Telefax +49 2373 9276 - 40

info@eco-schulte.de

www.eco-schulte.de

Our compendium represents a compilation of all products from our range of services. These are subject to different delivery classes. Special variants included are often manufactured to customer specifications and sometimes require longer delivery times and minimum purchase quantities. Further advise can be given by your contact person.

■ SYSTEM TECHNOLOGY FOR THE DOOR

